

ENERGY

POWER SUPPLIER PROJECT SOLUTIONS



SHENZHEN MAX POWER CO.,LTD

深圳市聚阳能源有限公司

[www.szmaxpower.com](http://www.szmaxpower.com)



# COMPANY PROFILE



Shenzhen Max Power Co.,Ltd. -founded by senior lithium battery manufacturer in the new energy industry, is dedicated to the research and development, production, sales and supporting service solutions of new energy lithium battery products. It has become an innovative high-tech enterprise with independent import and export rights and general taxpayer qualifications, ranking at the forefront of new energy industry.

Adhering to the ingenuity and continuous innovation, Max Power is dedicated to produce lithium battery for lead acid replacement, electric motorcycle/bicycle/scooter, solar system, telecom base station, power tool, industrial custom, outdoor emergency power, as well as various types of lithium battery products. With its excellent quality and perfect service, Max Power has established its own good company reputation and brand reputation.

Max Power set up a technical team lead by senior industry engineers, with years of experience in lithium battery product research and development, and constantly introduce international advanced technology. And equipment, with the "front-end, most advanced, safest, most stable" lithium battery research and development solution, has been designated as a dedicated service provider by many well-known enterprises and brands.

Advanced manufacturing equipment, precise testing equipment, automatic lithium battery matching machine, full computer monitoring intelligent aging equipment, leading enterprise management system, currently Max Power has certifications such as UN38.3, FCC, ISO, CE, ROHS, etc, Max Power will continue to upgrade the cost control system and quality product service quality, and create "excellent, efficient, safe and environmentally friendly" as an excellent brand name card.

Max Power energy is your best provider for safety , top quality and environmental power solutions .



# 6 company ADVANTAGES

01 With over 10 years R&D Team and Operation management team ;

02 With worldwide leading modern intelligent production lines ;

03 Experienced with government storage and power projects ;

04 Batteries approve series of "European Union" certificates ;

05 Perfect supply chain, stable and sufficient quality supply ;

06 Cooperated with international Top 10 battery distributors



# Battery Cells And BMS introduction

## Cells



Cylindrical Cell  
3.7V Series

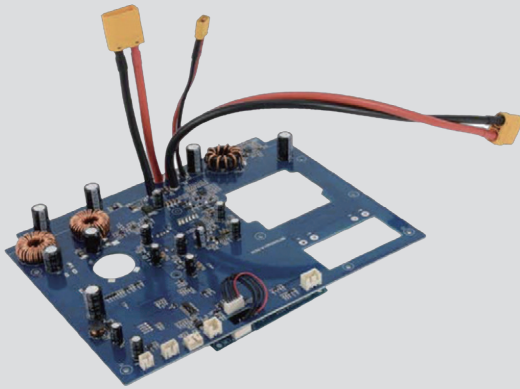


Cylindrical Cell  
3.2V series



Prismatic Cell  
3.2V series and 3.7V series.

## BMS



### 1.Charging Protection

Seiko IC effectively controls MOS to prevent battery overcharge and battery explosion

### 2.Discharge Protection

Prevent battery power from dying and affect the life of lithium batteries

### 3.Over Current Protection

Prevent the battery from being damaged by excessive instantaneous current

### 4.Short Circuit Protection

Automatic protection during abnormal short circuit prevent battery

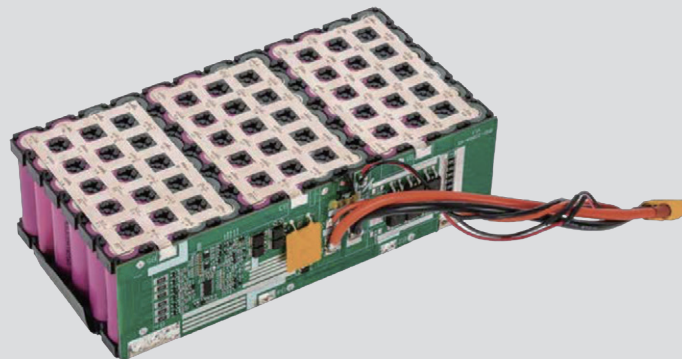
### 5.Temperature protection

The NTC temperature control probe is added to prevent the damage caused by the spontaneous combustion of the battery when the temperature is too high

### 6.Drop Protection

When the cable is off , the BMS has no output .

## Battery Pack with BMS



# APPLICATIONS



RV



Communication system



Solar power system



Solar street light



Electric boat



Portable power system

# APPLICATIONS



Electric bike



Electric scooter



Golf cart



Smart home



Motorcycle



Forklift

# LIFEPO4 REPLACEMENT SLA BATTERY

Item NO.	Battery Model	Rated Voltage (V)	continuous Discharge Current(A)	Charge cut-off Voltage(V)	Discharge cut-off Voltage(V)	Rated Capacity (Ah)	Size(mm)			Weight(Kg)
							LENGTH (mm)	WIDTH (mm)	HEIGHT (mm)	
1	12.8V 7.5 AH	12.8V	10A	14.6	10	7.5	151	65	94	≤1.0
2	12.8V 10AH	12.8V	20A	14.6	10	10	151	98	98	≤1.5
3	12.8V 20AH	12.8V	20A	14.6	10	20	181	76	167	≤3.0
4	12.8V 30AH	12.8V	30A	14.6	10	30	175	175	118	≤4
5	12.8V 40AH	12.8V	40A	14.6	10	40	197	165	170	≤5
6	12.8V 50AH	12.8V	50A	14.6	10	50	197	165	170	≤5
7	12.8V 80AH	12.8V	80A	14.6	10	80	331	175	216	≤10
8	12.8V 100AH	12.8V	100A	14.6	10	100	331	175	216	≤12
9	12.8V 120 AH	12.8V	120A	14.6	10	120	409	175	236	≤15
10	12.8V 150 AH	12.8V	150A	14.6	10	150	485	170	240	≤20
11	12.8V 200AH	12.8V	200A	14.6	10	200	520	238	218	≤25
12	12.8V 260AH	12.8V	260A	14.6	10	260	520	269	218	≤28
13	25.6V 50AH	25.6V	50A	29.2	20	50	331	175	216	≤12
14	25.6V 100AH	25.6V	100A	29.2	20	100	520	238	218	≤25
15	51.2V 25.6AH	51.2V	30A	58.4	40	25.6	331	175	216	≤21



## Remark

**Capacity, Battery case ,current & size could be customized.**

Max Power Lead acid replacement LiFePO4 Battery have high energy Density, Long cycle life ,widely work temperature range and good safety performance , Mainly use in solar power system.wind power, and others energy storage power systems. UPS system, telecommunications system. As well as electric tools ,electric bicycles ,electric motorcycles, military equipment and other fields.

# SOLAR ENERGY STORAGE BATTERY

Item NO.	Battery Model	Rated Voltage (V)	continuous Discharge Current(A)	Charge cut-off Voltage(V)	Discharge cut-off Voltage(V)	Rated Capacity (Ah)	Weight(Kg)
1	12.8V 60AH	12.8V	60A	14.6	10	60	≤8.0
2	12.8V 500AH	12.8V	500A	14.6	10	500	≤65
3	25.6V 70AH	25.6V	100A	29.2	20	70	≤20
4	25.6V 200AH	25.6V	200A	29.2	29.2	200	≤55
5	25.6V 400AH	25.6V	400A	29.2	29.2	400	≤110
6	25.6V 600AH	51.2V	600A	29.2	29.2	600	≤170
7	51.2V 10AH	51.2V	20A	58.4	40	10	≤5
8	51.2V 20AH	51.2V	20A	58.4	40	20	≤10
9	51.2V 30AH	51.2V	30A	58.4	40	30	≤15
10	51.2V 40AH	51.2V	40A	58.4	40	40	≤20
11	51.2V 50AH	51.2V	50A	58.4	40	50	≤25
12	51.2V 100AH	51.2V	100A	58.4	40	100	≤45
13	51.2V 120AH	51.2V	120A	58.4	40	12	≤55
14	51.2V 200AH	51.2V	200A	58.4	40	200	≤58
15	51.2V 300AH	51.2V	300A	58.4	40	300	≤120



Remark

**Capacity, Battery case ,current & size could be customized.**

Max Power have All series energy storage solutions. Provide battery pack solution, design ,production, -testing.certification,logistics etc service. Our production with "CAN", RS485 and RS232 communication function and Bluetooth. Max power also provide customize service, Solar energy storage battery use for solar home system, telecommunications system,Grid power and power generation system.

# BATTERY FOR SOLAR LIGHT ,LED LIGHT & EMERGENCY LIGHT

Item NO.	Battery Model	Rated Voltage (V)	continuous Discharge Current(A)	Charge cut-off Voltage(V)	Discharge cut-off Voltage(V)	Rated Capacity (Ah)	Size(mm)			Weight(Kg)
							LENGTH (mm)	WIDTH (mm)	HEIGHT (mm)	
1	12V 100AH	11.1V	50A	12.75	8.1	100AH	380	232	80	≤8.0
2	24V 50AH	22.2V	15A	25.5	16.2	50AH	380	232	80	≤8.0
3	12V 60AH	11.1V	30A	12.75	8.1	60AH	308	208	80	≤6.0
4	24V 30AH	22.2V	15A	25.5	16.2	30AH	308	208	80	≤6.0
5	12V 50AH	11.1V	25A	12.75	8.1	50AH	265	191	70	≤4.0
6	24V 25AH	22.2V	15A	25.5	16.2	25AH	265	191	70	≤4.0
7	12V 40AH	11.1V	20A	12.75	8.1	40AH	265	191	70	≤4.0
8	24V 20AH	22.2V	15A	25.5	16.2	20AH	265	191	70	≤4.0
9	6.4V 3AH	6.4V	3A	7.5	5	3AH	71	53	27	0.18
10	6.4V 5AH	6.4V	5A	7.5	5	5AH	74	67	36	0.3
11	6.4V 10AH	6.4V	10A	7.5	5	10AH	130	72	35	0.6
12	12.8V 5AH	12.8V	5A	14.6	10	5AH	132	75	37	0.6
13	12.8V 10AH	12.8V	10A	14.6	10	10AH	145	66	66	1.5
14	12.8V 20AH	12.8V	20A	14.6	10	20AH	155	136	80	3
15	12.8V 40AH	12.8V	40A	14.6	10	40AH	284	135	75	5.5
16	24V 5AH	25.6V	5A	29.2	20	5AH	136	85	70	1.5
17	24V 10AH	25.6V	10A	29.2	20	10AH	295	80	60	3
18	24V 20AH	25.6V	20A	29.2	20	20AH	284	145	77	5.5



Remark

**Capacity, Battery case ,current & size could be customized.**

Max power Solar light battery have Lithium ion and LiFePO4 battery type, higher energy Density make battery weight is light. Could install the controller in battery case .

Emergency light battery voltage usually 3.2v and 6.4v . Capacity from 0.5Ah -6Ah. Standard BMS inside to control battery.



# TELECOM BASE STATION BATTERY

Item NO.	Battery Model	Rated Voltage (V)	continuous Discharge Current(A)	Charge cut-off Voltage(V)	Discharge cut-off Voltage(V)	Rated Capacity (Ah)	Size(mm)			Weight(Kg)
							LENGTH (mm)	WIDTH (mm)	HEIGHT (mm)	
1	48V 10AH	48V	10A	54.6	37.5	10AH	400	442	44	8.5
2	48V 20AH	48V	20A	54.6	37.5	20AH	440	530	45	1.5
3	48V 30AH	48V	20A	54.6	37.5	30AH	440	420	134	18
4	48V 50AH	48V	30A	54.6	37.5	50AH	483	440	133	30.3
5	48V 75AH	48V	50A	54.6	37.5	75AH	440	420	222	39
6	48V 100AH	48V	50A	54.6	37.5	100AH	480	479	176	43
7	48V 150AH	48V	70A	54.6	37.5	150AH	440	580	222	80
8	48V 200AH	48V	100A	54.6	37.5	200AH	660	660	850	90

## Remark

### Capacity, Battery case ,current & size could be customized.

Max Power 48V Series LiFePO4 Battery is storage battery, Provide reliable back up power for Mobile communications,internet equipment,remote control,transmission device and others system.

Multiple storage batteries could connect in parallel to be a battery system.By smart centralized monitoring and install in standard cabinet.

They can be expanded, for communications and energy storage power. Achieve effective power solutions. Batteries with "CAN", RS485 and RS 232 communication function and Bluetooth .



# PORTABLE POWER STATION


Model	MP100	MP300	MP500	MP1000	MP2000
Rated power	100W	330W	500W	1000W	2000W
Rated Capacity	97.68Wh	288.6wh	519.48wh	799.2wh	2304W
Standard Capacity	3.6V 26400mAh	3.7V 78000mAh	3.7V 140400mAh	3.7V 216000mAh	3.2V 720000mAh
Overload protection	130±20W	360±20W	550±40W	1100±80W	2100±80W
AC output	AC220V±10% / 50HZ	110V±10%/60HZ	110V±10%/60HZ	110V±10%/60HZ	220V±10%/60HZ
Output waveform	Correction wave	Pure sine wave	Pure sine wave	Pure sine wave	Pure sine wave
USB output	QC3.0/18W	QC3.0/18W	QC3.0/18W	QC3.0/18W	QC3.0/18W
Type-C output	PD18W	QC3.0/18W	PD60W	PD60W	PD60W
cigaret lighter output	*	12V /10A	14V/8A	14V/8A	14V/8A
DC 5521 output	12V / 8A	12V / 5A	14V/8A	14V/8A	14V/8A
Wireless charging	*	5W	10W	10W	*
Charging input voltage	PD18W	12-24V	12-26V	12-26V	220V±10%/50HZ
PV input	*	*	*	*	Support
Working temperature	~10 ~ 40°C	~10 ~ 40°C	~10 ~ 40°C	~10 ~ 40°C	~10 ~ 40°C
Weight(N.W)	0.9kg	3.3kg	4.8kg	6kg	21kg
Weight(With accessories)	1.2kg	4.3kg	5.8kg	7kg	23kg
Dimension	220*120*49mm(L*W*H)	205*155*165mm(L*W*H)	290*194*200mm(L*W*H)	290*194*200mm(L*W*H)	380*330*340mm(L*W*H)
Applicable area	US/JP ,CN	CN,US/JP,UK,AU,DE	CN,US/JP,UK,AU,DE	CN,US/JP,UK,AU,DE	CN,US/JP,UK,AU,DE




# Electric bicycles, electric motor lithium ion battery packs,

All the following case are available in our factory to be customized with different capacities and voltages.


## 1 Rear frame lithium battery pack

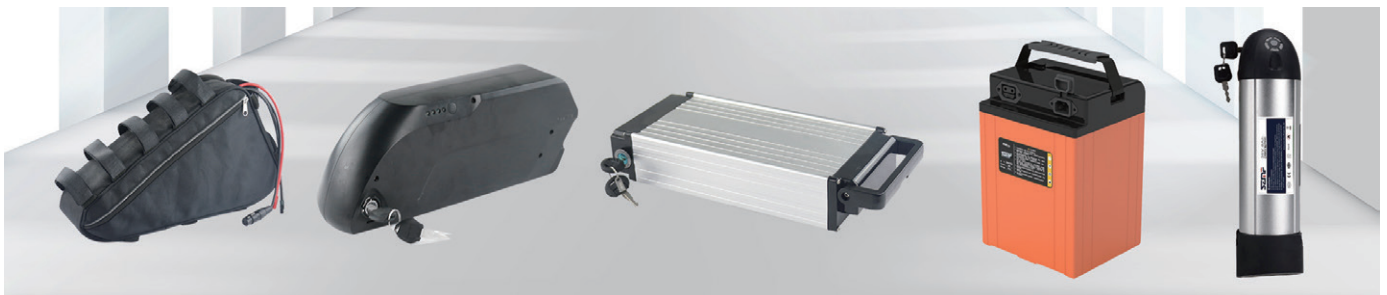
	Model	Cells number	Volt and Capacity		
			2200mAh	2600mAh	2900mAh
	10S5P	50	36V 11Ah	36V 13Ah	36V 14.5Ah
	13S4P	52	48V8.8Ah	48V10.8Ah	48v 11.6Ah
	Size		379*99*78mm and customized		

## 2 Folding bicycle lithium battery pack

	Model	Cells number	Volt and Capacity		
			2200mAh	2600mAh	2900mAh
	10S4P	40	36V8.8Ah	36V 10.8Ah	36V 11.6Ah
		Size		379*99*78mm and customized	

## 3 Silverfish type lithium battery pack

	Model	Cells number	Volt and Capacity		
			2200mAh	2600mAh	2900mAh
	10S6P	60	36V 13.2Ah	36V 15.6Ah	36V 20.4Ah
	13S5P	65	48V11Ah	48V13Ah	48v 14.5Ah
	Size		379*144*78mm and customized		



# Electric motor lithium battery packs

Model	Cells type	Charging current	Charging volt	Discharging current	Discharging volt
46.8V 50Ah	lithium ion	10A	54.6V	50A	35.75V
48V 50Ah	lifepo4	10A	54V	50A	37.5V
61.2V 40Ah	lithium ion	8A	71.4V	40A	46.75V
60.8V 40Ah	lifepo4	8A	68.4V	40A	47.5V
72V 40Ah	lithium ion	8A	84V	40A	50V
73.6V 40Ah	lifepo4	8A	82.8V	40A	57.5V

Capacity, Battery case ,current & size could be customized.



## Marine lifepo4 battery packs

Feature: Long cycle life, high reliability; small size, light weight, high energy density, contribute to environmental protection; wide operating temperature range, good high and low temperature performance; high efficiency, energy saving, stable power supply, high power output, visual design; system self-maintenance High coefficient and strong environmental adaptability.

Application areas: ships, yachts, water rescue, sightseeing boats, submarines, etc.

Model	Charging current	Charging volt	Discharging current	Discharging volt
12.8V 100Ah	50A	14.4V	100A	10.0V
12.8V 200Ah	100A	14.4V	200A	10.0V
12.8V 500Ah	200A	14.4V	200A	10.0V
25.6V 100Ah	50A	28.8V	100A	20.0V
25.6V 300Ah	100A	28.8V	200A	20.0V
25.6V 500Ah	200A	28.8V	200A	20.0V
112V 200Ah	100A	126V	200A	87.5V
224V 200Ah	100A	252V	200A	175V
540V 300Ah	100A	604.8V	150A	450V

Capacity, Battery case ,current & size could be customized.



# RV, Electric Vehicles lithium battery packs

Feature: Lithium batteries are the power source of electric vehicles and the only guarantee for the stable operation of electric vehicles. Special lithium batteries for electric vehicles have the advantages of large capacity, maintenance-free, high efficiency, energy saving, high power output, modular design, etc., and are widely used. Applications: driverless cars, electric cars, electric buses, electric patrol cars, electric sightseeing cars, four-wheeled scooters, electric special vehicles, etc.

Model	Charging current	Charging volt	Discharging current	Discharging volt
12.8V 100Ah	80A	14.6V	80A	10V
12.8V 150Ah	100A	14.6V	100A	10V
12.8V 200Ah	100A	14.6V	100A	10V
25.6V 100Ah	20A	28.8V	100A	20V
25.6V 60Ah	12A	28.8V	60A	20V
25.6V 180Ah	36A	28.8V	140A	20V
25.6V 80Ah	16A	28.8V	35A	20V
25.6V 200Ah	40A	28.8V	130A	20V
46.8V 112.5Ah	22.5A	54.6V	60A	39V
46.8V 90Ah	18A	54.6V	100A	39V
50.4V 90Ah	18A	58.8V	50A	42V
50.4V 108Ah	21.6A	58.8V	50A	42V
50.4V 140Ah	28A	58.8V	200A	42V
51.2V 50Ah	10A	57.6V	100A	40V
51.2V 60Ah	12A	57.6V	50A	40V
51.2V 90Ah	18A	57.6V	50A	40V
51.2V 120Ah	24A	57.6V	60A	40V
51.2V 200Ah	40A	57.6V	120A	40V

Capacity, Battery case ,current & size could be customized.

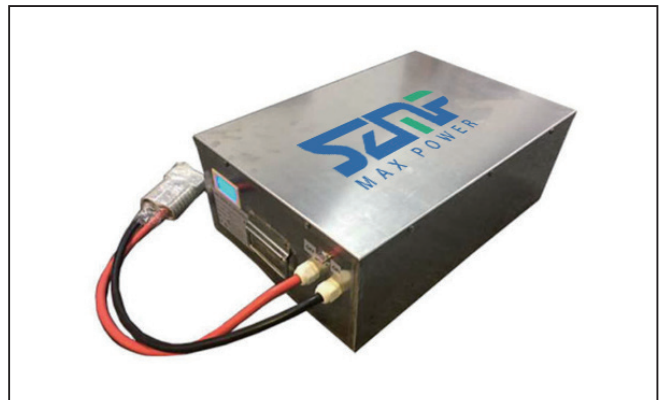


# Golf cart lithium battery packs

Feature: Lithium batteries for golf carts are converted into customized products with small size, light weight and high energy density, which are beneficial to environmental protection, intelligent management, and very suitable for semi-manual assistance.

Model	Charging current	Charging volt	Discharging current	Discharging volt
10.8V 20Ah	4A	12.6V	20A	9.0V
12.8V 16Ah	5A	14.4V	25A	10.0V
12.8V 22Ah	5A	14.4V	25A	10.0V
14.4V 15.4Ah	5A	16.8V	25A	12.0V
14.4V 18Ah	5A	16.8V	25A	12.0V
14.4V 17.5Ah	5A	16.8V	25A	12.0V
14.4V 26Ah	5A	16.8V	25A	12.0V

Capacity, Battery case ,current & size could be customized.



# Customized type lithium battery packs

Feature: Using high-performance lithium battery pack for power supply, strong endurance, high energy ratio, light weight, small size, high cycle life, high safety, high voltage and good consistency, etc., to ensure continuous, efficient and stable operation of the product. Safer and more environmentally friendly. The size is flexible and the appearance is small. The size design can be specified according to customer product requirements

Model	Charging current	Charging volt	Discharging current	Discharging volt
3.2V 1.5Ah	0.3A	3.65V	1.5A	2.5V
3.2V 3Ah	0.6A	3.65V	3A	2.5V
3.2V 4.5Ah	0.9A	3.6V	2A	2.5V
3.2V 10.5Ah	2.1A	3.65V	5.2A	2.5V
3.6V 2.2Ah	0.4A	4.2V	2.2A	3.0V
3.6V 2.6Ah	0.5A	4.2V	2A	3.0V
3.6V 6Ah	1A	4.2V	2A	3.0V
6.4V 1.5Ah	0.3A	7.2V	1.5A	5.0V
6.4V 3Ah	0.6A	7.2V	3A	5.0V
6.4V 4.5Ah	0.9A	7.2V	3A	5.0V
7.2V 2.2Ah	0.4A	8.4V	1A	6.0V
7.2V 22Ah	4A	8.4V	8A	6.0V
9.6V 3Ah	0.6A	10.8V	1.5A	7.5V
10.8V 2.2Ah	0.4A	12.6V	1A	9.0V
10.8V 40Ah	5A	12.6V	15A	9.0V
12.8V 3Ah	0.6A	14.4V	1.5A	10.0V
12.8V 6.4Ah	1.3A	14.4V	6.4A	10.0V
12.8V 9.3Ah	1A	14.4V	1.5A	10.0V
14.4V 8.8Ah	3A	16.8V	10A	12.0V
16V 1.5Ah	0.3A	18V	0.75	12.5V
22.4V 22.4Ah	3A	25.2V	5A	17.5V
25.2V 4.5Ah	1A	29.4V	4.5A	21.0V
25.6V 15Ah	5A	28.8V	10A	20.0V
28.8V 7.5Ah	2A	32.4V	3A	22.5V
32.4V 18Ah	4A	37.8V	15A	27.0V

Capacity, Battery case ,current & size could be customized



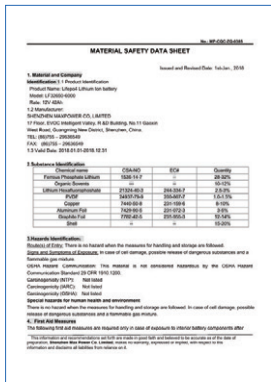
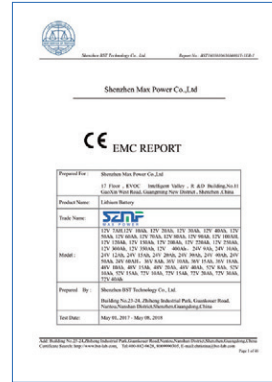


# FACTORY PRODUCTION DIAGRAM





# CERTIFICATES



## PACKAGE & SHIPPING



We're very experienced with air and sea shipping, and with professional battery packages. Max Power always believes that service is the most important aspect of our business, and has established long-term strategic partnerships with many world well-known domestic foreign enterprises.





# Cautions

---

## How to maintain Lithium Battery ?

---

Lithium batteries are presently the most commonly used energy storage devices on electric bike, electric scooter, golf car, mobile phones, laptops, digital cameras and other electric devices. Learning how to maintain lithium batteries can not only prolong battery lifetime but also protect your device from potential damage.

**1. Charge new batteries.** It's not necessary to charge over 12 hours when first used. When a device powered by batteries is purchased, sellers will usually tell us the batteries must first be charged 12 hours before using. Actually, this is unnecessary. Unlike common Ni-CD or Ni-MH batteries, most lithium ion batteries are activated before leaving the factory. Due to their low self-discharge, it's unnecessary to charge lithium ion batteries for such a long time when new. Lithium ion batteries are ready for use when the charger indicates so, and they will reach their best capacity after 3 or 5 cycles.

**2. Use appropriate chargers.** Many people take great care of their electronic gadgets, but often neglect the consequences of bad chargers on their lithium ion batteries. When choosing a charger, the original charger is the best choice. If that's unavailable, a high quality charger that has an overcharge protection function, or a brand name charger will do. A low quality battery charger can lead to shorter run times, premature battery failure, or even fire or explosion.

**3. Avoid frequently over charging.** Over charging with a low quality charger may let the battery's interior rise to a high temperature, which is bad for the lithium ion battery and charger. Thus, simply fully charging is good enough - overcharging will make your lithium battery into a little bomb if overcharge protection function is missing.

**4. Avoid touching metal contacts.** All batteries' contacts need to be kept clean for best performance. When carrying batteries around, do not let the contacts touch metal objects such as keys; this could cause a short circuit, damaging the battery or potentially resulting in a fire or an explosion.

**5. Avoid using often in high or low temperature environments.** Lithium ion batteries have optimal working and storage temperatures. If they're continually used in extreme temperature environments, this will negatively affect battery use time and useful cycles.

**6. Avoid long periods without using or recharging.** If batteries will be left unused for 3 months or more, partially recharge them (to around 30-70% of capacity, depending on planned storage time), then store the device to prevent battery damage. You may need to take the device out of storage and charge again after a few months .



---

## Shenzhen Max Power Co.,Ltd

Add : 3F, A2 Block ,Guangming S&T Park,China Merchants, No.3009 Guanguang Road ,  
Guangming District ,Shenzhen ,China

Web: [www.szmaxpower.com](http://www.szmaxpower.com)

Tel : 0755—23696504

Email : [info@szmaxpower.com](mailto:info@szmaxpower.com)

## 深圳市聚阳能源有限公司

地址：深圳市光明区观光路3009号招商局智慧城A2栋3楼

网址： [www.szmaxpower.com](http://www.szmaxpower.com)

电话：0755—23696504

邮箱： [info@szmaxpower.com](mailto:info@szmaxpower.com)

